

**NOTES:**

**1. MATERIALS:**

1. FRAME: ALUMINUM ALLOY, 5000 SERIES
2. EXPANDED METAL: ALUMINUM 69% OPEN AREA
3. HARDWARE: STAINLESS STEEL
4. OIL BOOM: BOOM-X WITH ULTRA-FILTER-TEX

**2. PERFORMANCE CHARACTERISTICS (TYP):**

PART NUMBER	FILTERED FLOW RATE (CFS)	DEBRIS CAPACITY (CU-FT)	WIDTH NOM.	HEIGHT
MFF1206-1	0.57	0.4	12"	6"
MFF1806-1	0.97	0.6	18"	6"
MFF2406-1	1.3	0.8	24"	6"
MFF3606-1	2.3	1.3	36"	6"

BYPASS UNRESTRICTED OVER TOP

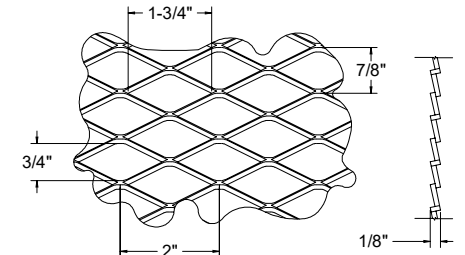
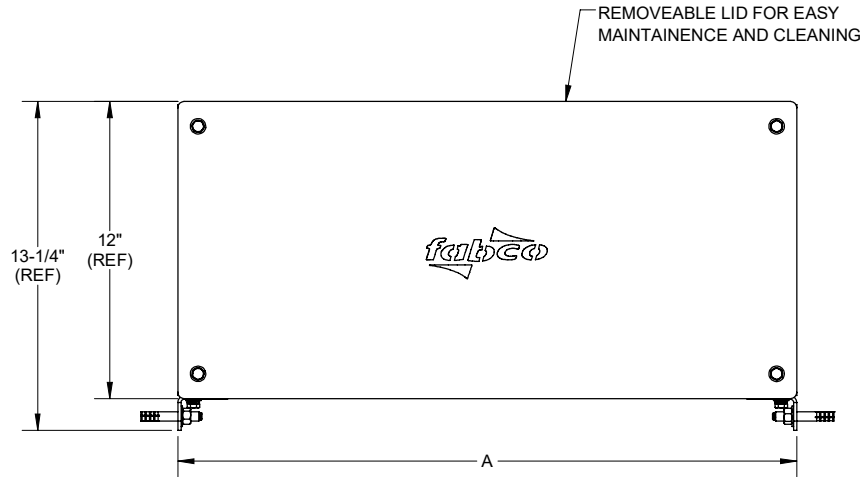
**3. ADJUSTMENT: 2" WIDTH**

**4. TYPICAL INSTALLATION:**

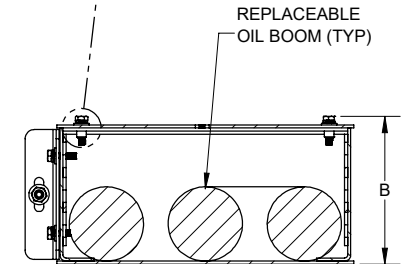
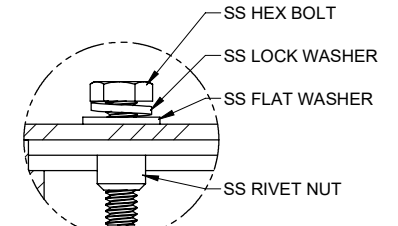
PLACE THE STORMFLUME FILTER ASSEMBLY IN THE FLUME BED. CENTER AND SECURE IN PLACE USING THE CONCRETE ANCHORS AND HARDWARE PROVIDED. ADJUST DIVETER FLANGES AS NECESSARY TO DIRECT THE INCOMING STORMWATER INTO THE FILTER.

**5. REPLACEMENT OIL BOOM P/N: MFFXXXX-1-720**

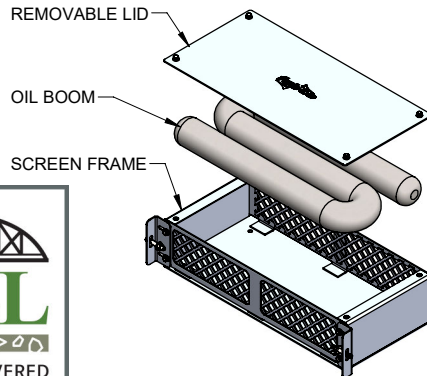
**6. CUSTOM SIZES ALSO AVAILABLE. CONTACT SALES@FABCO-INDUSTRIES.COM**



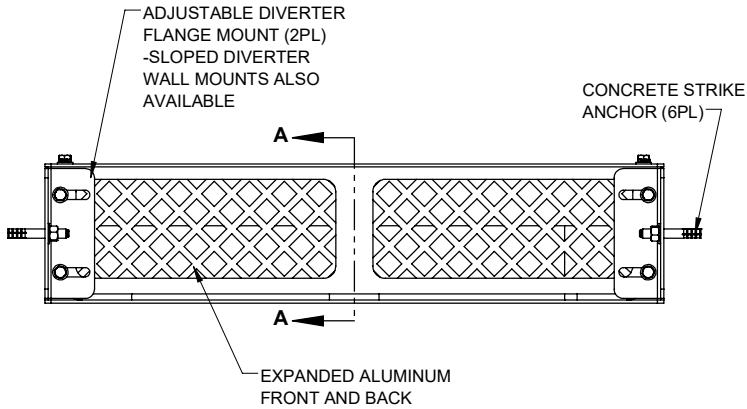
**EXPANDED METAL DETAIL REFERENCE**



**SECTION A-A**



**REFERENCE VIEW  
(EXPLODED)**



**ENGINEER AND CONTRACTOR NOTE:** FABCO INDUSTRIES WATER QUALITY INSERTS (WOIS) ARE MANUFACTURED TO PROPERLY FIT INLETS BY USING SPECIFIC INFORMATION COMPILED IN A SURVEY OF THE "AS-BUILT" INLET. IN RETROFIT SITUATIONS THE SURVEY IS DONE TO DOCUMENT THE THREE CRITICAL ASPECTS OF WQI DESIGN (GRATE/FRACTION MEASUREMENTS, OPEN/CLEAR SPACE MEASUREMENTS, AND PROTRUSION MEASUREMENTS). IN NEW CONSTRUCTION, FABCO PRODUCT DRAWINGS ARE ESSENTIALLY PLACE HOLDERS BASED ON THE SPECIFIED INLETS. ONCE THE INLETS ARE BUILT, THE PROCESS REVERTS TO THE RETROFIT APPROACH OF SURVEYING THE AS-BUILT INLETS TO CONFIRM FABCO INSERT DESIGN. PLEASE USE THE QR CODE TO ACCESS THE SURVEY FORM AND COMPREHENSIVE GUIDANCE OF THE SURVEY PROCESS. ALTERNATIVELY, NAVIGATE TO [www.fabco-industries.com/stormwater-inlet-survey-assistance](http://www.fabco-industries.com/stormwater-inlet-survey-assistance)

**PROPRIETARY AND CONFIDENTIAL**  
THIS DOCUMENT IS THE PROPERTY OF FABCO INDUSTRIES AND IS CONVEYED WITH THE EXPRESS CONDITION THAT IT AND THE INFORMATION CONTAINED IN IT ARE NOT TO BE USED, DISCLOSED, OR REPRODUCED IN WHOLE OR IN PART, FOR ANY PURPOSE WITHOUT THE EXPRESS WRITTEN CONSENT OF FABCO INDUSTRIES, AND THAT NO RIGHT IS GRANTED TO DISCLOSE OR SO USE ANY INFORMATION CONTAINED IN SAID DOCUMENT.

UNLESS OTHERWISE SPECIFIED  
REMOVE ALL BURRS  
BREAK SHARP EDGES .002 - .020  
FILLET .020 MAX  
DIMENSIONS ARE IN INCHES AND  
INCLUDE CHEMICALLY APPLIED  
OR PLATED FINISHES

TOLERANCES:  
DEC .00 ± .01  
DEC .000 ± .005  
FRACT ± 1/16  
ANGLE ± 2°

APPROVAL DATE  
DWN J.C. 4/23/2024  
CHKR J.P. 4/23/2024  
ENGR J.P. 4/23/2024  
UPD

FABCO INDUSTRIES, INC.  
24 CENTRAL DRIVE  
FARMINGDALE, NY 11735  
WWW.FABCO-INDUSTRIES.COM

**fabco**  
INDUSTRIES, INC.  
MODULAR FLUME FILTER  
SIZE DWG. NO. MFFXXXX-1-000 REV A  
SCALE: NONE SHEET 1 OF 1

PROJECT  
MATERIAL  
SEE NOTES